

Jahn Mortars Standard Color Chart

M70 Limestone

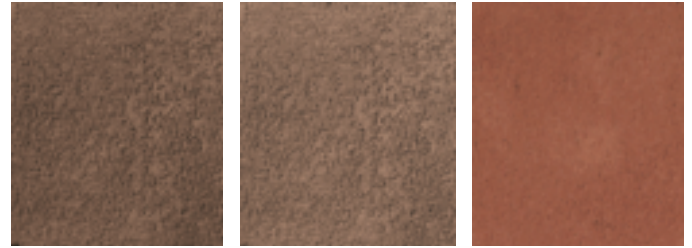


S1-LS

S2-LS

S3-LS

M70 Brownstone



S1-BS

S2-BS

S3-BS

M70 Sandstone



S1-SS

S2-SS

S3-SS

M90 Concrete



S1-CR

S2-CR

S3-CR

M100 Terra Cotta/Brick



S1-TC

S2-TC

S3-TC

M110 Pointing Mortar



S1-JL

S1-JS

S1-JB

M160 Granite



S1-GR

S2-GR

S3-GR

M160 Bluestone



S1-BL

S2-BL

S3-BL

M60 Stucco



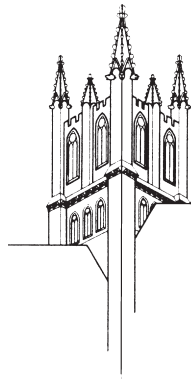
S1-ST

M120 Marble



S1-MA

Colors represented on this page are a close representation of actual color.
Some variation may occur between actual color and representations



Cathedral Stone® Products, Inc.

Jahn Mortars Sample Procedures

The standard color chart (opposite page), represents the mortar as closely as possible, and should be used as a guideline only. **To properly evaluate color, powder samples should be mixed with the correct amount of water and applied to masonry by a trained installer.** Do not apply samples to plywood, place in coffee cups or any other non-masonry surface. Custom colors are still available if required.

Standard Colors

A Lab fee will be charged for standard samples, which includes 1 quart of mortar for on-site application, and standard shipping. Expedited shipping is available at the customer's expense.

Custom Colors

A Lab fee will be charged for each color requested. With each sample, send the lab fee and a completed color sample information form.

Lab fee must be received by CSP before the color matching process will begin.